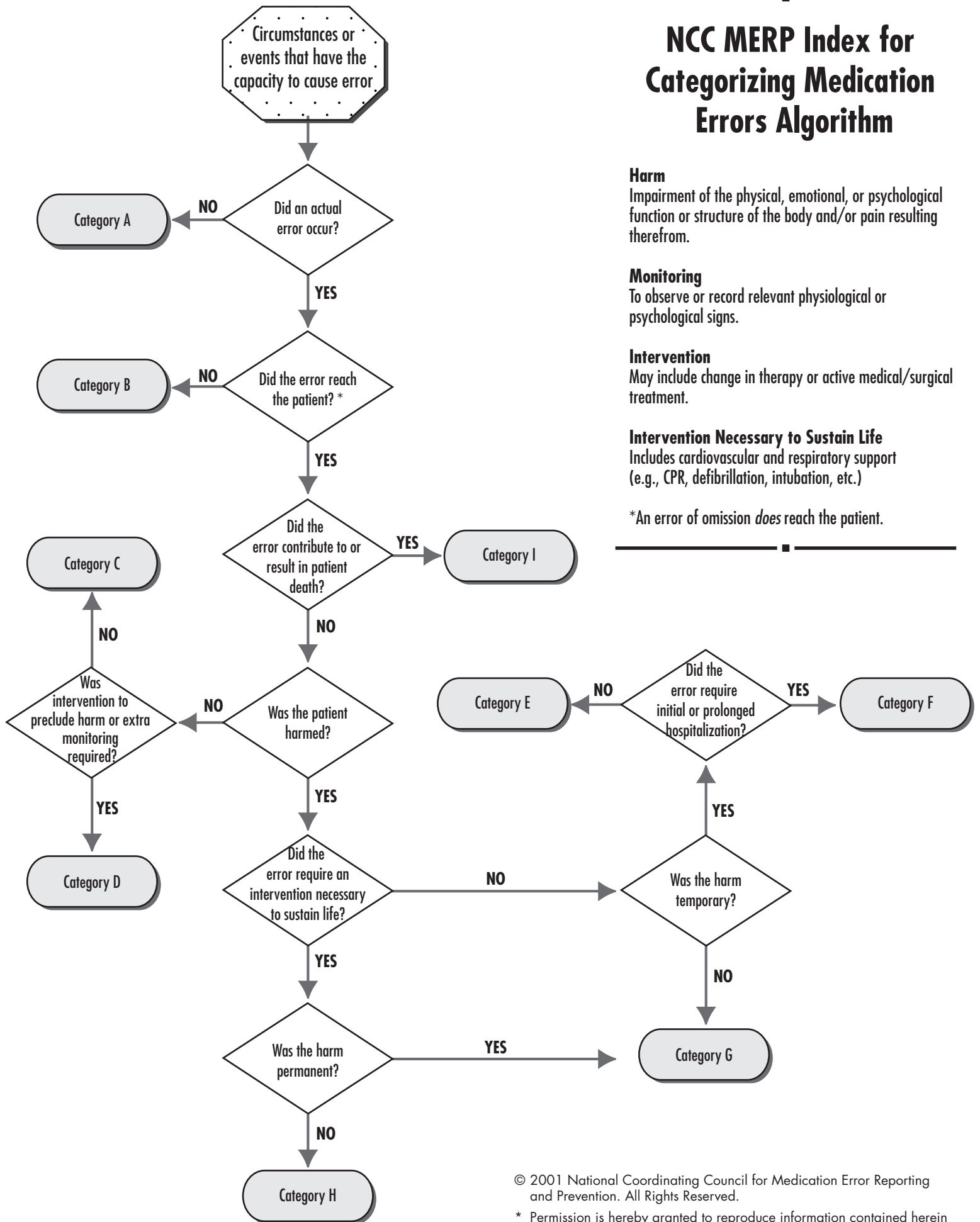


NCC MERP Index for Categorizing Medication Errors Algorithm



Harm

Impairment of the physical, emotional, or psychological function or structure of the body and/or pain resulting therefrom.

Monitoring

To observe or record relevant physiological or psychological signs.

Intervention

May include change in therapy or active medical/surgical treatment.

Intervention Necessary to Sustain Life

Includes cardiovascular and respiratory support (e.g., CPR, defibrillation, intubation, etc.)

*An error of omission *does* reach the patient.